



Midwest Note-Book

VOLUME 21 ISSUE 2 SEPTEMBER 2012

71st Annual Meeting in Naperville

IN THIS ISSUE

Chapter Meeting	1
From the Chair	2
Member News	3
Chapter Chair Election	4
Hotel/Travel Info	5
Scholarships	5
Registration	5
Preliminary Program	7
Administrative Structure	9

CALENDAR

- October 11–13, 2012
[71st Annual MLA
 Midwest Chapter Meeting](#)
 Naperville, Illinois
- February 27–March 3, 2013
[MLA Annual Meeting](#)
 San José, California
- May 15–18, 2013
[ARSC Annual Conference](#)
 Kansas City, Missouri

REMINDER

Submissions for the next issue of *Midwest Note-Book* are due December 15, 2012.

The Midwest Chapter's

71st annual meeting will be held in Naperville, Illinois, from Thursday, October 11, through Saturday, October 13, 2012. Thanks to our Midwest Chapter membership, we have an exciting program lined up! The annual meeting is also a great time to reconnect with colleagues, and we hope you'll enjoy getting together at Naperville's many local attractions.

An opening program on Thursday evening will feature Liam Teague, head of the unique Steelpan Studies program at Northern Illinois University (NIU), along with composer Jan Bach, who has written for steelpan. Friday's program includes member-proposed sessions on topics ranging from digitizing scores for IMSLP to the use of YouTube by music librarians and faculty to Free Lossless Audio Code (FLAC) and the demise of commercial music CDs. Dan Nichols, a guest presenter from NIU, will also discuss video conferencing software and other tools for meeting and presenting programs remotely. Friday's program will conclude with

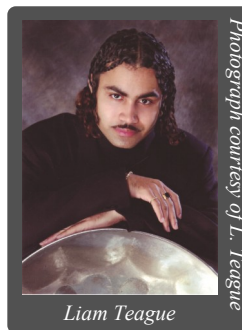


Courtesy of the Naperville
Convention and Visitors Bureau

Fredenhagen Park and Clocktower

a tour of the Naperville Carillon in Moser Tower and a concert demonstration of this impressive instrument by carillonneur Timothy Sleep. We'll continue Saturday morning with additional member-proposed sessions and our annual business meeting. A preliminary program is available on [page 7](#).

Accommodations during the meeting will be offered at the Country Inn & Suites Naperville. Complimentary amenities include a hot breakfast buffet, wi-fi throughout the hotel, parking, and local area shuttle transportation. The hotel also features a beautiful lobby space for relaxing with friends and colleagues, as well as a lounge bar. Please see hotel and transportation information on [page 5](#) for more details and reservation instructions. Thursday's opening program and catered reception and Saturday's sessions will all be held at the Country Inn & Suites. Friday's



Liam Teague

Photograph courtesy of L. Teague

Continued on page 8

From the Chair

Could someone please

tell me where summer went? There's this lovely idea that academics have all this "extra" time during the summer to "get things done." Ha! I don't know about you, but with the start of the school year just around the corner, my to-do list is longer than ever. Reference training to give, instruction sessions to design and give, and materials to order, process, and catalog, are just some of the many things that keep our libraries running.



But, at least we have the MWMLA Annual Meeting in Naperville, IL, from October 11–13 to look forward to. It offers an excellent chance to take a mini break from the everyday grind of work to meet and learn with your colleagues from around the region. The local arrangements committee, co-chaired by Michael Duffy (Northern Illinois University) and Jill King (DePaul University), has put together a fabulous meeting for the chapter. Naperville's proximity to Chicago should make it an easy location for members to reach and we have a great deal on the hotel. We've also managed to keep registration costs low—save by registering early (**by September 14**). See [page 7](#) for details about the program, and [page 5](#) for registration and hotel information.

The Leslie Troutman Scholarship (for paraprofessionals) and the Retirees Scholarship (for students currently in library school) make funds available to help defray the costs of attending our annual meeting. For information about applying for these scholarships, please see [page 5](#); the deadline for applications is **September 10**. I encourage you to alert students and paraprofessionals at your institutions to these opportunities.

This fall also brings us a MWMLA election. The nominating committee (Bob Delvin, Illinois Wesleyan University, chair; Jason Imbesi, Interlochen Center for the Arts; and John Wagstaff, University of Illinois at Urbana-Champaign) has assembled a very strong slate for chapter chair-elect. You can read more about the candidates Michael Duffy and Sheridan Stormes on [page 4](#). The electronic ballot is available through **September 15, 2012**, at the following link: <http://tinyurl.com/mwmlachair2012>.

Last, but not least, it is membership renewal time — more information about renewing your MWMLA membership is available on [page 3](#). When you renew, please consider a general donation to the chapter (which helps keep conference registration costs down) or to one or both of the travel scholarships. We are grateful for the generosity and support of our members. Thank you!

—*Kirstin Dougan, University of Illinois at Urbana-Champaign*



Midwest Note-Book

The Publication of the Midwest
Chapter of the Music Library
Association

ISSN 1063-5327
VOL. 21, NO. 2

Published in May, September, and
January

Midwest Note-Book is available free of charge on the Web site of the Midwest Chapter of the Music Library Association. Submissions and communication regarding *Midwest Note-Book* should be sent to the editor:

Anne Shelley
Milner Library
Campus Box 8900
Illinois State University
Normal, IL 61790-8900
anne.shelley@ilstu.edu

Deadline for submissions is the 15th of the month preceding publication.

Membership in the Midwest Chapter is \$12 annually (\$6 for students and retirees). Inquiries and renewals may be directed to the Secretary-Treasurer:

Jennifer Matthews
University of Notre Dame
1224B Hesburgh Library
Notre Dame, IN 46556
jmatthe2@nd.edu

The Midwest Chapter of the Music Library Association is a tax-exempt, non-profit organization.

<http://mlamidwest.org>

Member News and Notes

♪ Lindy Smith, formerly at University of Illinois at Urbana-Champaign, is now Research Services Archivist at The Ohio State University.

♪ The Rita Benton Music Library at the University of Iowa announces a new digital collection that makes available online the recordings of the Stradivari Quartet. The streamed audio recordings of this faculty string quartet may be accessed at <http://digital.lib.uiowa.edu/strad>.

Renewal Reminder

Fall is quickly approaching at our libraries and along with it comes the time for membership renewal! As you take a few minutes to fill out the form this year, please also consider a contribution to one of the scholarship funds or a general contribution to support the chapter.

The **Retirees Scholarship for Student Members** provides support for attendance at chapter meetings by students who are enrolled in a library school in the Midwest Chapter region.

The **Leslie Troutman Scholarship** provides support for attendance at chapter meetings by staff and paraprofessionals working in music libraries or with music collections in libraries in the Midwest Chapter region.

Your generous contributions of any size to these scholarships, or to the Chapter in general, will enable us to fund conference attendance for some and defray conference costs with contributions to the general funds. Please remember that contributions to the chapter are tax deductible.

The membership application/renewal form is available on the Chapter Web site at http://mlamidwest.org/documents/Application_2012.pdf. Please send your completed form and dues to:

Jennifer Matthews, Secretary-Treasurer
University of Notre Dame
1224B Hesburgh Library
Notre Dame, IN 46556

Member Publications

Clark, Joe C. "Job Trends in Music Librarianship: A Nine-Year Analysis from the Music Library Association's Job List." *Notes: The Quarterly Journal of the Music Library Association* 69, no. 1 (2012): 44-58.

Conor, Erin, Michael J. Duffy IV, and Lindsay Hansen. "Interlibrary Loan and Music Collections: A Survey of Current Practices." *Music Reference Services Quarterly* 15, no. 1 (2012): 2-21.

Morris, Liz Berndt. "Building a Collection in Electronic Music: Considerations and Sources." *Music Reference Services Quarterly* 15, no. 1 (2012): 34-40.

Puente, Mark and Susannah Cleveland. "Variation on a Traditional Theme: The Question of Racial and Ethnic Diversity in MLA." *Notes: The Quarterly Journal of the Music Library Association* 68, no. 1 (2011): 48-59.

New Members

Dustin Ludeman
Student, Indiana University Bloomington

Treshani Perera
Student, Illinois State University

Patrick Sifuentes
Student, Dominican University

Jennifer Lee Vaughn
Student, University of Michigan

Welcome to the MLA Midwest Chapter!

Election for Chapter Chair

It is time to vote for the next chapter chair of MWMLA. The nominating committee is pleased to present two fabulous candidates for chair: **Michael Duffy** (Northern Illinois University) and **Sheridan Stormes** (Butler University). Read more about the candidates and cast your vote at the following link: <http://tinyurl.com/mwmlachair2012>. The ballot will be open until **September 15, 2012**. Election results will be announced at the business meeting in Naperville. Many thanks to our nominating committee members: Bob Delvin, chair (Illinois Wesleyan University), Jason Imbesi (Interlochen Center for the Arts), and John Wagstaff (University of Illinois at Urbana-Champaign)!

Michael J. Duffy IV is Music Librarian and Head of Branch Libraries, as well as Head of the Special Collections Department at the Northern Illinois University Libraries. He has worked as Music Librarian at Northern Illinois University since 2002. He holds a M.M. in Musicology from Northwestern University, a M.L.I.S from Dominican University, and a B.M., magna cum laude in Music Education from Western Michigan University. He has been a member of the Music Library Association since 2001. Michael's publications include "Interlibrary Loan and Music Collections: A Survey of Current Practices," (co-authored with Erin Conor and Lindsay Hansen) in *Music Reference Services Quarterly* (2012); "Current Issues in Music Reference" in *The Reference Librarian* (2006); and "Selected Research and Writings on Instruction for Music Librarians: An Annotated Bibliography" in *Music Reference Services Quarterly* (2004). His presentations include "Comprehensiveness of Indexing, a Decade Later: A Study of the International Index to Music Periodicals, the Music Index, and RILM Abstracts of Music Literature," (presentation at MLA Midwest Chapter meeting, October 28, 2011); "Putting Your Best Foot Forward: Successful Navigation of the Job Interview," (panel discussion participant at MLA Annual Meeting, March 23, 2010); and "MLA'ers: Past, Present, and Into Our Future," (panel discussion participant in plenary session at MLA Annual Meeting, February 23, 2006). Michael's MLA Midwest Chapter positions include Secretary-Treasurer of the Midwest Chapter (2003–2007) and Co-Chair of the Midwest Chapter Local Arrangements Committee (2012). He has also served on the Midwest Chapter Program Committee (2012), the Midwest Chapter Membership Committee (2002

[Continued on page 8](#)

Sheridan Stormes has been a member of the Midwest Chapter of MLA for (literally) more years than she can remember. She has served on the Chapter's Membership Committee (for which she has been Outreach Coordinator), Public Services Committee, Nominating Committee, and Logo Selection Task Force and has been involved in the Oral History Project for the Chapter. Last year, she was the Local Arrangements Chair and Program Committee member for the 2011 Chapter Meeting in Indianapolis, Indiana. In addition, Sheri is an active member of the national Music Library Association. She has served as a member and chair of MLA's Personnel Subcommittee and chaired both the Career Development and Services Committee (2008–2011) and the most recent Placement Officer Search Committee (2010). She was also a member of the Program Committee for MLA's 2009 Annual Meeting in Chicago and has been a member of the Nominating Committee (2008), Development Committee (2005), and served as Coordinator of the Résumé and Cover Letter Review Service (2005) and as a Career Mentor (2005–2006). Currently, she serves on the Promotional Sales Subcommittee. Sheri has acted as coordinator/moderator and presenter for various programs at both Midwest Chapter and MLA Annual Meetings. She was a contributor to *Careers in Music Librarianship II* (2004) and was chief contributing editor of the "Music – General subsection" portion of the 20th edition of *Magazines for Libraries* (2012). She has also contributed to the forthcoming (4th) edition of *A Basic Music Library*. Sheri is currently the Performing & Fine Arts Librarian and Associate Professor at Butler University in Indianapolis, Indiana, where she has also served as a member of the Vocal Studies faculty at Butler's Jordan College of Fine Arts. During her

[Continued on page 8](#)

Annual Meeting Registration

Early registration for the Midwest Chapter annual meeting will be offered at a fee of \$75 for regular members and \$37 for student and retiree members. **Registration forms must be postmarked by Friday, September 14th to receive this discounted rate.** After September 14th, registration fees will be set at \$90 for regular members and \$45 for student and retiree members. Please fill out the registration form on [page 6](#) or at http://mlamidwest.org/documents/Naperville_Registration_Form.pdf. and send the completed form and a check payable to the “Midwest Chapter, Music Library Association” to:

Michael Duffy, Music Librarian
Music Building 175-A
Northern Illinois University
DeKalb, IL 60115

Hotel and Travel Information

The Country Inn & Suites Naperville is located at 1837 Centre Point Circle in Naperville, Illinois. A room block is being held at the group rate of \$79 per night, plus tax (single or double rooms) under the name “Music Library Association, Midwest Chapter.” Reservations may be made by calling the hotel directly at 630-505-3353, or by calling their reservation line at 1-888-201-1746, or online at <http://www.countryinns.com/mlamidwest>. Check-in time is 3:00 p.m. and check-out time is 12:00 p.m. Reservations must be guaranteed by a major credit card or one night’s deposit; cancellations will be accepted without penalty until 4:00 p.m. on the day prior to arrival.

The deadline to receive this negotiated group rate is Sunday, September 23, 2012. Reservations made after this date will be subject to availability and offered at the hotel’s current best available rate.

The Country Inn & Suites is conveniently located off Interstate 88 at the Naperville Road exit. Naperville is situated between two major airports: O’Hare (33 miles) and Midway (26 miles). Flat rate taxi service is available from either airport for approximately \$45–55 each way; recommended vendors are American Taxi (847-255-9614) and Flag Limo (630-357-5257). Naperville is also served by the Metra commuter rail; from Chicago’s Union Station, take the Burlington Northern Santa Fe (BNSF) line to Naperville, where pick-up arrangements can be made with the hotel’s complimentary local shuttle service.

Scholarships: Call for Applications

The Midwest Chapter offers scholarships to eligible members who wish to attend its annual meeting. The Retirees Scholarship and the Leslie Troutman Scholarship support meeting attendance for library school students and library support staff, respectively. Nominations from chapter members as well as applications from students and staff are encouraged. To nominate or apply, download the appropriate form from the [chapter Web site](#).

Retirees Scholarship: http://mlamidwest.org/documents/Retirees_Scholarship_12.pdf

Troutman Scholarship: http://mlamidwest.org/documents/Troutman_Scholarship_12.pdf

Please submit completed forms to the chapter chair by U.S. Mail or e-mail:

Kirstin Dougan
Music and Performing Arts Library
University of Illinois at Urbana-Champaign
1114 W. Nevada St.
Urbana, IL 61801

DEADLINE: Monday, September 10, 2012



The Midwest Chapter of the Music Library Association
 2012 Annual Meeting — Naperville, Illinois
 Thursday - Saturday, October 11-13, 2012
 Meeting Registration Form

Name: _____ First-time attendee? _____
 Address: _____
 City: _____ State: _____ Zip: _____
 Home phone: _____ Work phone: _____ E-mail: _____
 Institutional affiliation: _____
 Name to appear on name tag: _____

Registration Fees	Amount enclosed
<i>EARLY REGISTRATION (sent by Friday, Sept. 14, 2012)</i>	
Regular Member \$75.00	\$ _____
Student Member \$37.00	\$ _____
Retiree \$37.00	\$ _____
<i>REGULAR REGISTRATION (sent after Friday, Sept. 14, 2012)</i>	
Regular Member \$90.00	\$ _____
Student Member \$45.00	\$ _____
Retiree \$45.00	\$ _____
<i>DAY REGISTRATION</i>	
Regular, Student, and Retiree Members \$50.00	\$ _____
<i>Contribute to MW-MLA</i>	
<i>RETIREES SCHOLARSHIP FOR STUDENT MEMBERS</i>	\$ _____
Support for attendance at chapter meetings by students enrolled in library school in the Midwest Chapter region.	
<i>LESLIE TROUTMAN SCHOLARSHIP</i>	\$ _____
Support for attendance at chapter meetings by staff and paraprofessionals working in music libraries or with music collections in the Midwest Chapter region.	
<i>UNRESTRICTED CONTRIBUTION</i>	\$ _____
TOTAL	\$ _____

Return completed form with check payable to “Midwest Chapter, Music Library Association” to:

**Michael Duffy, Music Librarian
 Music Building 175-A
 Northern Illinois University
 DeKalb, IL 60115**

Cancellation Policy: Refund of the registration fee (minus \$25.00 handling fee) will be given up until noon of Thursday, October 11, 2012.



71st Annual Chapter Meeting

Naperville, Illinois · October 11-13, 2012

Preliminary Program

Thursday, October 11

1:00–5:00 p.m.

Registration

1:00–5:00 p.m.

Committee Meetings

1:00–3:00 p.m. Cataloging, Membership, T.A.P.S.

3:00–5:00 p.m. Public Services, Publications

7:00–10:00 p.m.

Opening Reception & Presentation

The Steelpan (Steeldrum): National Instrument of Trinidad and Tobago; Past, Present and Future

Liam Teague, Northern Illinois University

Jan Bach, Northern Illinois University, retired

Friday, October 12

8:00–8:45 a.m.

Registration

8:45–9:00 a.m.

Welcoming Remarks

9:00–11:30 a.m.

What Is the Buzz about FLAC?

Therese Dickman, Southern Illinois University

Break

Telepresence Collaboration: Challenges, Tools and Best Practices

Dan Nichols, Northern Illinois University

Sharing Our Special Collections with the World: an IMSLP Digitizing Project

James Procell, University of Louisville

11:30 a.m.–1:00 p.m.

Lunch (on your own)

1:00–2:45 p.m.

It's Awful / I Can't Work Without It: Music Librarians, Faculty Members, and YouTube

Kirstin Dougan, University of Illinois

What Do Students Want?: Understanding Performing Art Majors' Format Preferences

Joe Clark, Kent State University

Break

2:45–5:00 p.m.

Naperville Carillon Tour and Concert Demonstration

5:00 p.m.

Dinner (on your own)

Saturday, October 13

8:00–9:00 a.m.

Executive Committee Meeting

9:00–11:00 a.m.

Preserve, Store, Describe: Local Audio Collections

Richard LeSueur, retired

Lynne Weber, Minnesota State University, Mankato

Peg Lawrence, Minnesota State University, Mankato

Kerri Scannell Baunach, University of Kentucky

Break

Current Research in Psychology & Librarianship

Lynn Gullickson, Center for Christian Life Enrichment (Northbrook, IL)

Joan Schuitema, Northeastern Illinois University

H. Stephen Wright, Northern Illinois University

11:00 a.m.–12:30 p.m.

Business Meeting

71st Annual Meeting, *continued*

sessions will be held immediately across the street at Northern Illinois University's state-of-the-art conference center.

Dining options are plentiful in Naperville! The hotel and conference center are located within walking distance of Freedom Commons, which hosts a mix of quick-service restaurants and finer dining choices. Naperville's charming downtown district—where you'll find a great variety of restaurants, bars, pubs, and shops—is a short drive or shuttle ride away. Lunches and dinners during the meeting will be on your own, and we'll be happy to recommend our favorite places! Other local attractions include the award-winning Naperville Public Library, the scenic 2.5 mile Riverwalk along the DuPage River, the 19th-century Naper Settlement museum village, the Chicago Premium Outlet Mall, the Morton Arboretum, and North Central College's campus and performing arts facilities. A train stop in downtown Naperville along the Metra's BNSF line also connects you to Chicago's Union Station. And anyone staying over Saturday night will have a chance to hear the DuPage Symphony Orchestra (whose membership includes our own Deb Morris!) perform in Naperville at Wentz Concert Hall.

For any questions about accommodations, travel plans, dining, or local attractions, please contact your meeting hosts or members of the Local Arrangements Committee. We look forward to seeing you in Naperville!

—*Local Arrangements Committee*

Michael Duffy, co-chair (Northern Illinois University)

Jill King, co-chair (DePaul University)

Lynn Gullickson, L.P.C. (Center for Christian Life Enrichment, Northbrook, IL)

Kathleen Haefliger (Chicago State University)

Deborah Morris (Roosevelt University)

Richard Schwegel (Roosevelt University)

Stephen Wright (Northern Illinois University)

Election for Chapter Chair, *continued*

Michael Duffy

—present, chair from 2008–2011, past-chair from 2011–2012), the Midwest Chapter Publications Committee (2002–present), and as Chair of the Midwest Chapter Nominating Committee (2007 and 2004). His service to the Music Library Association includes serving on the Program Committee (2013 meeting), the Nominating Committee (2011), the Reference and Access Services Subcommittee (2008–2012), the Career Development & Services Committee (2008–2012), the Personnel Subcommittee (2006–2008), the Outreach Subcommittee (2003–2007), the Local Arrangements Committee (2009 Annual Meeting), the Placement Officer Search Committee (2006–2007), the Résumé and Cover Letter Review Service (2008–present, coordinator in 2010–11, co-coordinator in 2009–2010), and serving as an advisor for the MLA Career Advisory Service (2009–present).

Sheridan Stormes

tenure at Butler, Sheri taught and coached English, French, German, Italian, and Latin diction for singers for twenty-two years. She also has taught graduate and undergraduate music research classes. A mezzo-soprano and native Clevelander, Sheri began her vocal studies at the Cleveland Institute of Music. She holds a B.M. and a M.M. in Vocal Performance from Butler University's Jordan College of Fine Arts and a M.S. in Library Science from Indiana University. Sheri is a member of the National Association of Teachers of Singing, and is a member and past National Associate Regent of Pi Kappa Lambda. She has been a professional vocalist and adjudicator in the Indianapolis area for over twenty-five years.

Midwest Chapter of the Music Library Association: Administrative Structure

EXECUTIVE COMMITTEE

Chair: Kirstin Dougan (University of Illinois at Urbana-Champaign), 2012
Past-Chair: Paula Hickner (University of Kentucky), 2012
Secretary-Treasurer: Jennifer Matthews (University of Notre Dame), 2012
Newsletter Editor: Anne Shelley (Illinois State University), 2012
Web Editor: Abbey Chapel (University of Minnesota), 2012

STANDING COMMITTEES

Bylaws (*One-year terms; members may be reappointed*)
Beth Christensen (St. Olaf College), Chair, 2012
Grace Fitzgerald (University of Iowa), 2012
Paula Hickner (University of Kentucky), 2012

Membership (*Three-year terms; members may be reappointed; Chair serves year as Chair-Elect, two years as Chair, one year as Past-Chair*)
Jason Imbesi (Interlochen Center for the Arts), Chair, 2013
Michael J. Duffy (Northern Illinois University), Past-Chair, 2014
Robert DeLand (VanderCook College of Music), 2012
Paula Hickner (University of Kentucky), 2013
Richard LeSueur (Ann Arbor, MI), 2013
Jennifer Matthews (University of Notre Dame), Chair, 2014
Sheridan Stormes (Butler University), 2012
Lynne Weber (Minnesota State University, Mankato), 2012
Carla Williams (Indiana University), 2013

Program (*One-year terms; members may be reappointed*)
Paula Hickner (University of Kentucky), Chair, 2012
Michael J. Duffy (Northern Illinois University), 2012
Jill King (DePaul University), 2012

Publications (*Three-year terms; members may be reappointed; Chair serves one year as Chair-Elect, two years as Chair, one year as Past-Chair*)
Jennifer Matthews (University of Notre Dame), Chair, 2014
Abbey Chapel (University of Minnesota), 2012
Therese Dickman (Southern Illinois University-Edwardsville), 2012
Michael J. Duffy (Northern Illinois University), 2013
Greg Fitzgerald (Western Michigan University), 2014
Laura Gayle Green (University of Missouri-Kansas City), 2012
Kathleen Haefliger (Chicago State University), 2013
Kathleen Harrison (University of Illinois at Urbana-Champaign), 2013
Mary Huisman (University of Minnesota), 2012
Ruth Inman (Kennedy-King College), 2012
Lauren Parsons (Minnesota State University, Mankato), 2013
Amy Pennington (Saint Louis University), 2012
Anne Shelley (Illinois State University), 2012
Wendy Sistrunk (University of Missouri-Kansas City), 2014
John Wagstaff (University of Illinois at Urbana-Champaign), 2012
Lynne Weber (Minnesota State University, Mankato), 2014

SPECIAL COMMITTEES

Cataloging (*Three-year terms; members may be reappointed; Chair serves one year as Chair-Elect, two years as Chair, one year as Past-Chair*)
James Procell (University of Louisville), Chair, 2013
Sue Stancu (Indiana University), Past-Chair, 2013
Kerri Baunach (University of Kentucky), 2012
Abbey Chapel (University of Minnesota), 2013
Patty Falk (Bowling Green State University), 2013
Grace Fitzgerald (University of Iowa), 2012
Mary Huisman (University of Minnesota), 2013
Jason Imbesi (Interlochen Center for the Arts), 2013
Kevin Kishimoto (University of Chicago), 2013
Nicole Long (Wheaton College), 2013
Jennifer Matthews (University of Notre Dame), 2013
Deborah Morris (Roosevelt University), 2012
Chuck Peters (Indiana University), 2013
Sandy Rodriguez (University of Missouri-Kansas City), 2013
Mark Scharff (Washington University), 2012
Janet Scott (Indiana University), 2013
Wendy Sistrunk (University of Missouri-Kansas City), 2013
Sean Witzman (University of Missouri), 2013

Public Services (*Three-year terms; members may be reappointed; Chair serves one year as Chair-Elect, two years as Chair, one year as Past-Chair*)
Liz Berndt Morris (Central Michigan University), Chair, 2012
Tom Caw (University of Wisconsin-Madison), 2012
Robert Delvin (Illinois Wesleyan University), 2014
Kirstin Dougan (University of Illinois at Urbana-Champaign), 2014
Laura Gayle Green (University of Missouri-Kansas City), 2013
Jill King (DePaul University), 2012
Rebecca Littman (University of Wisconsin-Milwaukee), 2014
Ruthann McTyre (University of Iowa), 2013

Technology, Archives, Preservation, and Sound (T.A.P.S.) (*Three-year terms; members may be reappointed; Chair serves one year as Chair-Elect, two years as Chair, one year as Past-Chair*)
Emma Dederick (Indiana University), Chair, 2013
Susannah Cleveland (Bowling Green State University), 2012
Kathleen Harrison (Southern Illinois University-Carbondale), 2014
Sandy Rodriguez (University of Missouri-Kansas City), 2014
Misti Shaw (DePauw University), 2012
Peter Szabo (Ohio Wesleyan University), 2014

*Terms expire in October of the year indicated.
This version of the administrative structure should reflect changes made at the 2011 chapter meeting. Please report errors and omissions to the editor.*

